



QUEENSLAND  
RUGBY

# COMMUNITY FACILITIES STRATEGY

2026 - 2030

JUNE 2026 UPDATE

# CONTENTS



Executive Summary	1	Facilities Overview	13
CEO Introduction	2	Community Facility Hierarchy	14
2020-25 Success Stories	3	Leveraging the Strategy	15
Strategy Background	4	Project Types	16
Government Alignment	5	Priority Project Assessment	17
Strategic Alignment	6	State Priority Projects - Regional	18
Strategic Pillars	7	State Priority Projects - Metropolitan	19
Return on Investment	8	Ballymore Stadium	20
The Queensland Landscape	9	Investment Opportunity Timeline	21
Community Rugby Participation	10	Key Actions	22 - 23
Catering for Growth	11	Facility Requirements per Region	24 - 50
Community Insights	12	Appendices	51

# EXECUTIVE SUMMARY



**The Queensland Rugby Facilities Strategy establishes the development and investment priorities for rugby facilities across Queensland over the next five years. Building on the progress achieved through the 2020–2025 Facility Strategy, this updated roadmap responds to sustained participation growth, increasing female engagement, and evolving community expectations for inclusive, fit-for-purpose infrastructure. The Strategy serves two primary purposes: to provide clubs, associations and sub-unions with a clear facility development roadmap to support informed infrastructure planning; and to articulate Queensland Rugby's infrastructure needs to government, philanthropic and industry partners, presenting a transparent pipeline of priority projects that supports co-investment advocacy across all funding pathways.**

Since 2022, Queensland rugby clubs have collectively raised more than \$3 million through 25 successful grant applications. This seed funding has catalysed co-investment from government and council partners, delivering upgrades to playing fields, lighting, changerooms, and club amenities across the state. While these outcomes demonstrate strong momentum, statewide facility audits and recent club health checks confirm that significant infrastructure gaps remain, particularly in gender-inclusive amenities, lighting compliance, and ageing venue amenity.

With Queensland entering a golden decade of major sporting events, including the 2027 Men's Rugby World Cup, the 2029 Women's Rugby World Cup, and the Brisbane 2032 Olympic and Paralympic Games, there is a unique opportunity to strengthen the community foundations of the game and ensure facilities are equipped to support participation, performance pathways, and event legacy outcomes.

Aligned with the Queensland Government's Sport Strategy 2025–2029 and the National Play Well Strategy, this Facilities Strategy provides a clear, evidence-based framework to guide investment and partnership. Four enduring pillars underpin planning and prioritisation: delivering inclusive rugby facilities, improving existing venue capacity, planning for growth and demand, and strengthening partnerships and investment pathways.

Drawing on 129 facility audits, participation data across 38,000 registered players, and consultation with more than 80% of Queensland clubs, the Strategy identifies 12 state priority projects spanning metropolitan and regional Queensland. These projects represent a current total co-investment ask of approximately \$38.25 million, sought across government grants, philanthropic support, council contributions, and commercial partnerships, with a further three projects to be costed as planning and engagement matures. By providing this transparent and structured investment pipeline, the Strategy ensures Queensland Rugby and its partners are aligned in delivering facilities that welcome new participants, enhance the member experience, and contribute meaningfully to community wellbeing and the legacy of global sporting events across the decade ahead.

This Strategy also acknowledges the broader infrastructure picture for Queensland Rugby. The development of Ballymore as a world-class high performance and community precinct, as a stated priority of the QRU Strategic Plan 2026–2030, is complementary to the community investment outlined here, not in competition with it. A commercially sustainable QRU is a stronger advocate and co-investor for community rugby, and the funding pathways that serve each are distinct by design. Both agendas are pursued in parallel, each through the partnerships and mechanisms most suited to their purpose.

# CEO INTRODUCTION //



Since the launch of the Queensland Rugby Facility Strategy in 2020, we have made significant progress in strengthening the foundations of our game through targeted investment in community infrastructure. Together with our partners, we have seen more than \$3 million invested in upgrades across Queensland rugby clubs, from playing fields and lighting to changerooms and club amenities, ensuring our facilities better reflect the needs of today's participants.

This updated Facilities Strategy builds on that momentum and reaffirms our commitment to working hand-in-hand with government, industry, and the rugby community to provide high-quality, inclusive facilities. Infrastructure is central to the growth of our game, enabling children to take up rugby, creating welcoming spaces for women and girls, supporting the participation of diverse communities, and ensuring our clubs remain the heartbeat of rugby across the state.

Aligned with Rugby Australia's From Green to Gold strategy and our own QRU Strategic Plan 2026–2030, this roadmap reflects our shared ambition to grow the game at every level. That ambition extends across the full spectrum of Queensland Rugby's infrastructure, from grassroots clubhouses and community playing fields, through to the development of Ballymore as a world-class high performance and community precinct. These are complementary priorities, as a commercially sustainable QRU is a stronger partner for community rugby, and this Strategy ensures both are pursued with the same intent and rigour.

The opportunity before us is significant. Queensland enters a golden decade of major sporting events, the 2027 and 2029 Rugby World Cups and the Brisbane 2032 Olympic and Paralympic Games, and our community



facilities must be ready to support the participation legacy those events can generate. The Strategy provides a clear framework for identifying and prioritising the right projects, in the right places, at the right time.

I want to acknowledge the invaluable contribution of our community clubs, volunteers, government and private sector partners whose support has laid the groundwork for what comes next. Together, we have the chance to shape the facilities and experiences that will strengthen rugby across Queensland and leave a lasting legacy for the generations to come.

**David Hanham**  
Chief Executive Officer

# 2020-25 STRATEGY SUCCESS STORIES //



Since 2022, Queensland Rugby clubs have raised more than \$3 million through 25 successful grant applications, delivering upgrades to fields, lighting, changerooms, and club amenities across the state. These outcomes reflect the drive and resourcefulness of our rugby community, but they also expose the limits of what clubs can achieve without broader support. In every case where significant infrastructure has been delivered, club funding has acted as the catalyst for co-investment from Queensland Government programs including the Minor Infrastructure Program, the Minor Infrastructure Facilities Fund and Games On!, as well as local councils and the Australian Government. This underscores the central premise of the **Partnership & Investment** pillar: clubs can identify the need and demonstrate commitment, but transformational infrastructure outcomes require collaboration, aligned priorities and sustained investment from all levels of government and industry.

CABOOLTURE RUGBY CLUB	NORTHS RUGBY CLUB - BRISBANE	GOONDIWINDI RUGBY CLUB	BROTHERS RUGBY CLUB - ALBION	SOUTHS RUGBY CLUB - BRISBANE
				
<p>\$6.4 million clubhouse &amp; spectator seating project supporting Rugby and Touch Football. Co-funded by Moreton Bay Regional Council and the State and Federal Government.</p>	<p>\$490,000 field lighting project. Supported by the State Government's Minor Infrastructure Program &amp; Brisbane City Council's Community and Recreational Assets Recovery and Resilience Program.</p>	<p>\$190,000 field lighting project to support Rugby and Cricket. Co-funded in partnership with the State Government, Goondiwindi Regional Council and Queensland Cricket.</p>	<p>\$470,000 flood recovery and field works. Funded through Brisbane City Council's Community and Recreational Assets Recovery and Resilience Program.</p>	<p>\$1.25 million supporting universal changeroom upgrades. Co-funded by the State Government's Game On! program and Brisbane City Council's Better Suburbs Grants.</p>

Key partners in the 2020-25 Facility Strategy Projects...



# STRATEGY BACKGROUND //



The updated Queensland Rugby Union Facilities Plan 2026–2030 builds upon the strong foundation established in the 2020–25 Facility Strategy. That document provided Queensland’s first statewide evidence base of 129 rugby venues and 218 playing fields, highlighting common challenges such as ageing infrastructure, inadequate lighting, and the need for gender-inclusive facilities.

This new plan continues that data-driven approach, integrating enhanced datasets and stakeholder insights to identify the next generation of facility priorities.

#### Key Data Sources:

- **Rugby Australia Facility Audit (2023):**
  - Involved 38 Queensland clubs across Premier, Suburban, and Regional tiers, identifying key gaps in lighting, change room inclusivity, and field quality.
- **Rugby Australia Club Health Check (2025):**
  - Completed by 80% of Queensland clubs, identifying infrastructure as the second highest priority behind player recruitment and retention.
- **QRU Community and Sub-Union Consultation:**
  - Targeted engagement sessions captured local needs, project readiness, and co-investment opportunities.
- **Demographic and Participation Mapping:**
  - Integrated with regional population growth projections to prioritise investment in high-demand or growth areas across Southeast, Regional, and Northern Queensland

This updated strategy provides a practical roadmap for investment, ensuring rugby facilities remain accessible, inclusive, sustainable, and community-connected—supporting the game’s evolution across the state.

# GOVERNMENT ALIGNMENT //



## Ministerial Charter

The QRU's Facility Strategy directly supports the Ministerial Charter's focus on community engagement and accessible infrastructure by ensuring inclusive, safe, and high-quality rugby facilities. Through investment in female-friendly changerooms, referee amenities, and accessible venues, QRU facilitates equitable participation opportunities and strengthens community cohesion, aligning with the government's commitment to fostering healthy, connected, and active communities.

## Queensland Sport Strategy 2025-2029

QRU's pillars of improving venue capacity and planning for growth reflect the state Sport Strategy's priorities for sustainable participation and future-ready infrastructure. By upgrading lighting, drainage, and hybrid surfaces, and leveraging data-driven regional forecasts, QRU ensures venues are fit-for-purpose, maximising utilisation while anticipating growth corridors, supporting the government's goal of high-quality, widely accessible sporting opportunities.

## National Play Well Strategy

Through its inclusive facilities and partnership-focused approach, QRU aligns with the Play Well Strategy's emphasis on equitable access and lifelong involvement. Multi-use hubs, shared-use agreements, and culturally safe environments support participation for diverse groups, reflecting Play Well's objectives to create welcoming, inclusive, and engaging sporting experiences for all Australians.

*“ Queensland Rugby is committed to partnering with government to deliver inclusive, sustainable, and future-ready facilities that support participation, strengthen communities, and contribute to a healthier, more connected Queensland. ”*

*Matt Horan, General Manager - Government*

# STRATEGIC ALIGNMENT //



## Rugby Australia Strategic Pillars

Participation Growth	Performance Excellence	Promotional Effectiveness
----------------------	------------------------	---------------------------

## Queensland Rugby Strategic Pillars

Grow the Game	Winning Teams in Red	Ignite Passion for Rugby	Secure our Commercial Future
---------------	----------------------	--------------------------	------------------------------

## Grow the Game Focus Areas

Ensure clubs and schools are supported & set up for sustained success	Innovate & strengthen Rugby participation programs & competitions	Attract & retain players through excellent Community Rugby experiences	Educate & upskill the capability across the community Rugby network
---	---	--	---

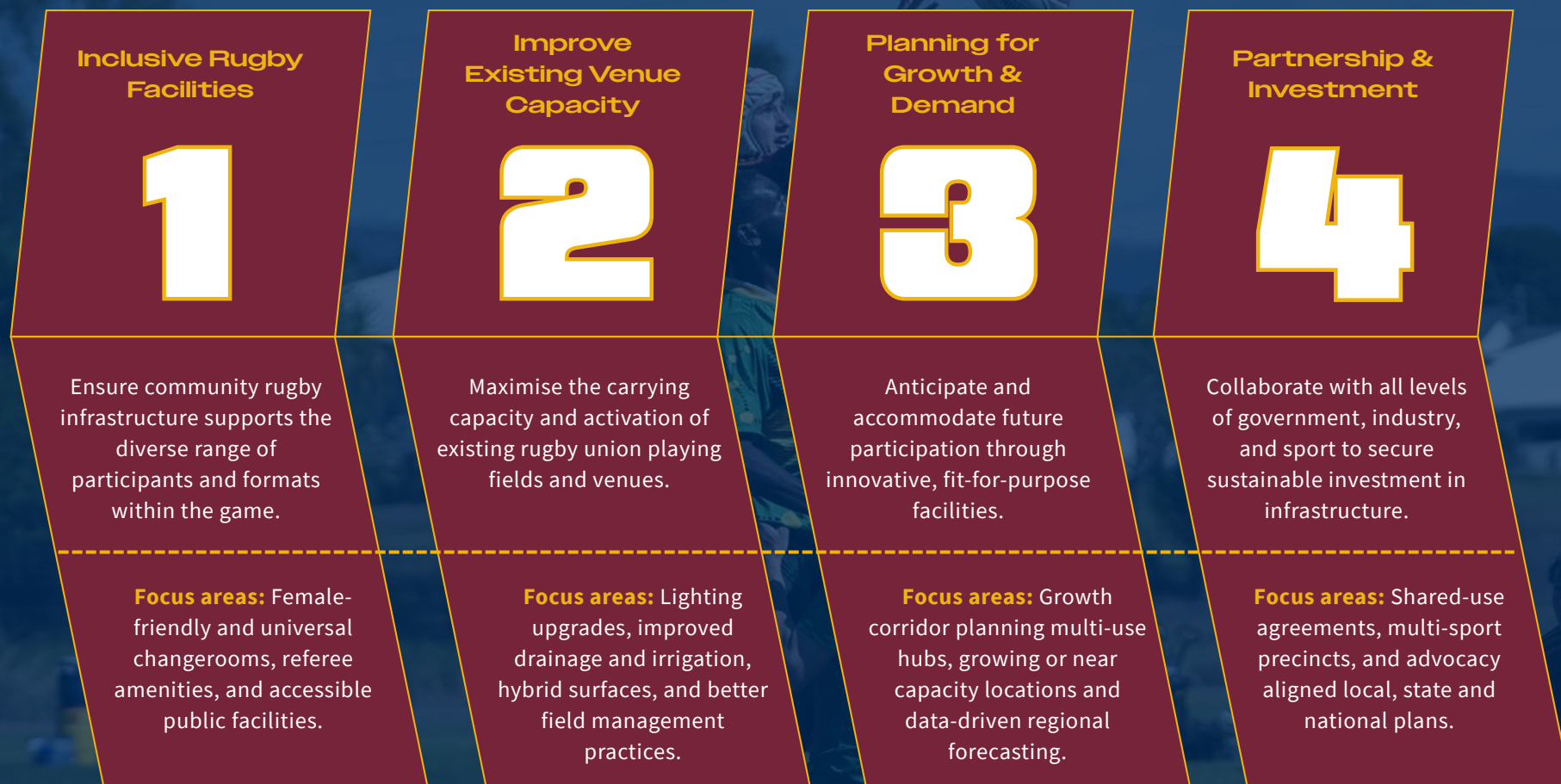
## Key Infrastructure Actions

Develop a state-wide Infrastructure & Facilities Strategy to improve the quality of community facilities	Review Progress against previous strategy & establish platform for updated audits and priority project criteria	Partner with local government and the rugby community to identify and communicate priority projects	Establish a Facilities Investment & Management Framework
--	---	---	--

# STRATEGIC PILLARS //



The QRU's Infrastructure Pillars are purposefully aligned with national and state government strategies to deliver inclusive, accessible, and future-ready sporting facilities. Each pillar reflects the priorities outlined in the Ministerial Charter, Queensland Sport Strategy 2025–2029, and the National Play Well Strategy — promoting community connection, sustainable participation, and collaborative investment. Together, they provide a clear framework to guide infrastructure development and attract targeted government and industry support.



# RETURN ON INVESTMENT //



Investment in rugby infrastructure delivers measurable returns that extend beyond the playing field. Well-planned facility upgrades increase participation capacity, improve inclusion outcomes, stimulate local economic activity, and strengthen community connection. By aligning infrastructure investment with growth corridors, inclusion standards, and regional event opportunities, rugby facilities become multi-dimensional community assets — generating social, health and economic value for local government areas and the state as a whole.



## Strengthens communities

Participation in community sport, particularly team sports, builds social connection, belonging and trust - contributing to stronger social outcomes.



## Social inclusion

Community clubs act as hubs where people of different backgrounds, cultures and abilities come together. Sport fosters bridging social capital — helping individuals form new networks, feel valued, and actively participate in community life.



## Healthier societies

Higher rates of sport participation are linked with improved health. When community sport is supported with appropriate facilities, the social benefits extend beyond participants to families and local communities.

## Global access & international profile

Rugby connects Australia to a truly global sport network — unlocking international tours, broadcast reach and tourism flows that raise the profile of Queensland and Australia.



## Olympic pathways and elite development

Rugby Sevens provides a direct Olympic pathway, lifting talent development, female participation and elite athlete investment — strengthening grassroots-to-high-performance pathways across the state.



## Economic impact

Outside of the provision of regular employment, the hosting of domestic and international events generates substantial economic stimulus through tourism.



Source: KPMG (2020) 'The Value of Community Sport & Active Recreation Infrastructure'; Adept Economics (2019) 'Economic, Social and Health Impacts of Sport and Active Recreation in Queensland'; ASC (2022) 'The Future of Australian Sport'; Queensland Government (2025) 'Queensland visitor blitz for Wallabies-Lions' Test Opener', World Rugby & Rugby Australia (internal data)

# THE QUEENSLAND LANDSCAPE //



**9.8%**

Queensland's population growth over the five years to June 2024 — the largest increase of any state or territory in Australia

**20.5%**

Percentage of total population attributing to one fifth of Australians at an annual growth rate

**38K**

Registered Rugby participants in 2024

**10.7%**

Increase in participation from 2022 to 2024

**18.7%**

Female rugby participants

Source: Queensland Treasury (2025) 'Population growth highlights and trends, Queensland'; Queensland Rugby Union Internal Data (2025)

# COMMUNITY RUGBY PARTICIPATION //



Community rugby participation across Queensland reflects a clear metropolitan–regional split, with overall numbers heavily concentrated in metropolitan areas driven by population density in Brisbane and the Gold Coast. Despite this, regional Queensland still represents approximately 35 per cent of the total player population, highlighting the game’s strong and enduring presence outside the south-east corner. This distribution reinforces the importance of an infrastructure strategy that responds to both high-demand metropolitan environments and the distinct needs of regional communities. Ensuring access to fit-for-purpose facilities across the state will be critical to sustaining participation and supporting future growth.

## METROPOLITAN

## REGIONAL

Region	2024 Participants	% Participation
Met North	7812	20.12%
Met South	5046	12.99%
Gold Coast	4980	12.82%
Met West	3177	8.18%
Sunshine Coast	2832	7.29%
Moreton	1374	3.54%

Region	2024 Participants	% Participation
North QLD	3859	9.94%
Darling Downs	3498	9.01%
Central QLD	2505	6.45%
Far North QLD	1677	4.32%
Mackay	1139	2.93%
Wide Bay	823	2.12%
Western QLD	110	0.28%

# CATERING FOR GROWTH //



Population growth patterns across Queensland highlight both the concentration of demand in major population centres and the need to maintain equitable access to quality facilities in smaller or slower-growing regions.

While large LGAs such as Brisbane, the Gold Coast, and Moreton Bay will continue to experience strong population growth, data suggests that much of this growth will be weighted through upgrades and optimisation of existing facilities rather than new developments. However some Rugby clubs nearing capacity levels and will require additional greenspace. This is identified in the region specific sections of the strategy.

At the same time, investment decisions must also recognise that smaller and more remote LGAs, while not growing as rapidly, often operate with aging or limited infrastructure that restricts participation. Ensuring these regions have safe, fit-for-purpose facilities is essential for maintaining statewide equity, supporting regional engagement, and sustaining the grassroots foundation of the game.

In summary, the data provides a clear signal: Queensland’s growth offers an opportunity to strengthen—not just expand—our network of rugby facilities, ensuring every community can participate in a quality rugby experience regardless of location.

## CURRENT POPULATIONS & PROJECTED GROWTH

LGA	2024 Population	2046 Projected Population	% Projected Growth	# Rugby Clubs
Brisbane	1,355,640	1,694,764	25.02%	21
Gold Coast	681,389	1,030,629	51.25%	9
Moreton Bay	522,494	834,581	59.73%	6
Logan	392,339	581,473	48.21%	4
Sunshine Coast	375,328	574,203	52.99%	9
Ipswich	259,886	555,648	113.80%	2
Townsville	204,541	273,925	33.92%	5
Toowoomba	184,377	220,463	19.57%	5
Cairns	178,104	239,956	34.73%	6
Redland*	170,225	353,874	7.90%	2
Mackay**	128,361	164,539	28.18%	5

\* Redland currently in the top 10 total population, but outside top 10 projected growth

\*\* Mackay outside top 10 total population, but inside top 10 projected growth

# COMMUNITY INSIGHTS //



Queensland Rugby's facility planning journey commenced in 2019 with a comprehensive statewide audit to understand the condition, capability, and gaps across community infrastructure. Since then, ongoing engagement and data collection have continued to validate the need for sustained investment and have helped clarify the key facility priorities across the state. Most recently, the 2025 Rugby Australia Club Health Check reinforced this, identifying facility improvement as the second-highest statewide priority—surpassed only by the recruitment and retention of players.

## TOP COMMUNITY IDENTIFIED INFRASTRUCTURE COMPONENTS



**Gender Neutral Player Amenities**



**Lighting**



**Clubhouse & social spaces**



**Additional Greenspace**



**Spectator Capacity**

**80%**

Clubs that completed the 2025 Rugby Australia Club Health Check

**2nd**

Infrastructure ranked as a priority across Queensland

**129**

Number of Rugby Clubs audited in 2019

# FACILITIES OVERVIEW //



218

Playing Fields

80%

of player change rooms in Queensland are not gender neutral

55%

of all player change room facilities are rated in the moderate, poor and very poor categories

38%

Playing fields not meeting the minimum lighting standard for training.

30%

Fields rated as low to moderate quality

22%

of rugby venues with no changeroom facilities.

“ Without targeted investment, infrastructure quality will constrain participation growth, inclusion outcomes and event legacy opportunities ”

Gaven Head, General Manager - Community Rugby

The statewide audit provided a clear picture of the current condition and capability of community rugby facilities across Queensland. The findings highlighted ongoing challenges around inclusion, accessibility, and the suitability of spaces to support the growing diversity of participants. This directly shaped the pillar of **Inclusive Rugby Facilities**, ensuring facility development and renewal prioritises environments that welcome all participants, particularly women, girls, and emerging community groups.

The audit also confirmed that many existing venues require improvement to remain fit-for-purpose now and into the future. This has informed the focus on **Improving Existing Venue Capacity**, ensuring that investment targets upgrades that enhance safety, functionality, and the participant experience.

Source: Queensland Rugby Union Data (2025)

# COMMUNITY FACILITY HIERARCHY //



This infrastructure strategy introduces a clearly defined facility hierarchy to guide the planning, investment and development of rugby facilities across Queensland. Consistent with QRU’s vision, **all rugby facilities should, at a minimum, meet the standards outlined in the [Rugby Australia Facility Guidelines](#)**, ensuring safe, accessible and fit-for-purpose environments at every level of the game. The hierarchy recognises a progression from basic community playing fields through to high-performance Centres of Excellence that support elite pathways and major events. A **strategic vision** is to also ensure **each major region** has access to at least **one Tier 1 or State/Regional facility**, ideally comprising a minimum of two playing fields, to act as a hub for talent development, competitions and community engagement. This structured approach enables targeted investment, clearer development pathways and sustainable growth of the game statewide.

Rugby Facility Hierarchy	State Elite	Tier 1 Community	Tier 2 Community	Tier 3 Community	Community Facilities
<b>Description</b>	Centre of Excellence and high-performance training facilities delivering elite pathway programs for the State / Territory. It is suitable to host professional rugby and Super Rugby training activities and can host state and national junior carnivals.	Club facilities must meet the standards required for hosting top-tier competitions within the State/Territory and accommodate international team training, including future RWC2027 team training bases. Regional Tier 1 facilities, typically co-located with other sports in key regional areas, serve as hubs for regional talent camps, pathways programs, finals, and community events.	Club facilities should be equipped to host second-tier senior club or junior competitions within the State/Territory, with a clubhouse being a necessary requirement.	Club facilities have the ability to host third-tier senior club or junior competitions within the State/Territory, but fails to meet all minimum standards within the Rugby Australia facility guidelines	Basic parks and pitches where rugby is played. Could be secondary competition fields for larger local clubs or facilities where entry level social rugby activities occur.
<b>Rugby Australia Facility Guidelines Standard Reference</b>	Elite/National	State/Regional	Club Level	Not aligned to standards	
<b>Example Competition</b>	Super W	Premier Rugby, National & State Championships	Community Rugby		Community Rugby, Non-contact formats and training.

# LEVERAGING THE STRATEGY //



Delivering meaningful improvements to community rugby facilities requires a unified approach built on collaboration, alignment, and shared investment. Each stakeholder, from clubs and Sub-Unions to government and funding partners, brings a unique strength that, when connected, drives greater impact. Partnerships are essential to achieving the long-term infrastructure outcomes outlined in the strategy's Partnerships and Investment pillar. When clubs and local associations engage early with governing bodies and government partners, projects become stronger, more strategically aligned, and more likely to attract investment. By working together, these organisations can ensure facility upgrades not only meet immediate needs but also contribute to a coordinated, sustainable network that supports rugby's growth across Queensland.



## NEED IDENTIFICATION

## PRIORITISATION

## ADVOCACY

## INVESTMENT

### COMMUNITY CLUBS



Act as the on-ground drivers, identifying facility needs, developing project ideas, and aligning opportunities with local, state, and federal priorities.

### SUB-UNIONS



Provide leadership across their regions by identifying shared infrastructure priorities, supporting collaboration between local clubs, and helping align projects to regional competition needs and growth opportunities.

### GOVERNING BODIES



Champion the game's infrastructure agenda, providing leadership, advocacy, and technical expertise to help clubs, sub-unions, and governments collaborate effectively and secure sustainable investment for the future of rugby.

### LOCAL GOVERNMENT



Partners directly with clubs and sub-unions to deliver community-level infrastructure projects that meet local sport and recreation outcomes and respond to population growth and participation needs.

### STATE GOVERNMENT



Focuses on projects that enhance participation pathways, inclusion, and accessibility, while ensuring alignment with statewide strategic investment frameworks.

### FEDERAL GOVERNMENT



Australian Government

Provides funding support for large-scale or regionally significant projects that deliver broad community and economic benefit.

### PHILANTHROPY



Offer additional investment avenues by supporting projects that demonstrate strong community impact, inclusion outcomes, or alignment with social responsibility objectives, helping bridge funding gaps and accelerate project delivery.

# PROJECT TYPES //



While QRU recognises every club’s ambition to improve its facilities, it must balance these aspirations against limited government funding. To guide fair and strategic investment, Infrastructure Pillars are used to distinguish ‘**Identified Projects**’—those that reflect community needs and club aspirations—from ‘**Priority Projects**’, which show strong pillar alignment, a shovel or near shovel ready, deliver the greatest region-wide benefit and generally have existing investment. As priority projects are completed, high-value identified projects may be elevated, ensuring a clear and sustainable infrastructure pipeline. This approach enables QRU to focus advocacy efforts, maximise funding outcomes, and strengthen alignment with Sub Unions and local government partners.

## PRIORITY PROJECTS

Large-scale, shovel ready projects that deliver clear, region-wide benefit.

Demonstrates alignment to one or more pillars of the Facilities Strategy.

Identified and validated through regional consultation.

Holds a public QRU ‘Priority Project’ designation, signalling strong strategic importance to Federal, State and Local Government partners.

Supported by enhanced and targeted Australian Rugby engagement, including business case development and funding submission support.

Backed by QRU-led advocacy for investment across the relevant levels of government.

## IDENTIFIED PROJECTS

Small to large-scale projects that enhance the community experience.

Demonstrates varying levels of alignment to the pillars of the Facilities Strategy.

Identified through regional submissions.

Holds a public QRU ‘Identified Project’ designation, signalling relevance to Federal, State and Local Government stakeholders.

Supported by Australian Rugby through general project guidance and assistance with funding submissions.

# PRIORITY PROJECT ASSESSMENT //



The development of the priority projects within this strategy has been shaped by extensive community consultation, including input from clubs, associations and local councils. These insights, combined with the strategic pillars, have informed a clear set of guiding questions used to assess need, alignment and potential impact. This framework ensures that proposed projects are evaluated consistently and transparently, reflecting both community priorities and long-term strategic outcomes. Together, these criteria help identify the projects best positioned to deliver meaningful benefits for rugby and the broader community.

<b>Inclusive Rugby Facilities</b>	Will the upgrade bring the facility to, or closer to, the Rugby Australia facility standards for inclusivity?	Does the project create a more welcoming environment for female participants, juniors, or underrepresented community groups?	Does the facility currently present a barrier to participation due to the condition, inadequacy or absence of player amenities?
<b>Improve Existing Venue Capacity</b>	Is there a noticeable disparity in facility quality compared with others in the area or region?	Will the project expand the venue's carrying capacity to enable more teams, training sessions or competitions to be hosted?	Does the project address an identified safety, maintenance or compliance risk?
<b>Planning for Growth &amp; Demand</b>	Is there documented evidence of participation growth, and/or is the project located within a high-growth population corridor?	Will the project futureproof the venue to accommodate projected demand over the next five to ten years?	Has the project been identified within, or is it consistent with, a local government sport and recreation plan, precinct masterplan or growth corridor strategy?
<b>Partnership &amp; Investment</b>	Does the project have endorsement from the relevant local council, and does it align with their facility investment priorities?	Does the project involve shared use or co-location with other sporting or community organisations?	Does the project have confirmed financial contributions through self capital and/or partnerships?

# STATE PRIORITY PROJECTS //



## REGIONAL

Government Details	Club	Project	Description & Funding Gap	Total Cost
Cairns Mulgrave / Kennedy	FNQ Rugby Inc.	Home of Rugby - tenure of facility	FNQ Rugby, in partnership with the Southside Crusaders Rugby Club, are seeking a home for rugby in the Cairns region. <b>Funding Gap = N/A</b>	NIL
Townsville Townsville / Herbert	Townsville & District Rugby Union	Facility Master Plan	The aging Hugh Street facilities require substantial improvements to meet Rugby Australia facility guidelines from player amenities, through to field lighting. <b>Funding Gap = 90%</b>	\$10 million
Mackay Mackay / Dawson	Mackay District Junior Rugby Union	Quarry Hill Facility Master Plan & lighting upgrade	The aging Quarry Hill facility requires substantial improvements to meet Rugby Australia facility guidelines from player amenities, through to field lighting. <b>Funding Gap = 100%</b>	TBC
Mount Isa Traeger / Kennedy	Mt Isa Rugby Union	Field lighting upgrade	Mt Isa Rugby, in partnership with Mt Isa Regional council, are seeking to upgrade current lighting levels to meet competition standard. <b>Funding Gap = Funded</b>	\$200,000
Toowoomba Toowoomba North / Groom	Toowoomba Regional Council*	Clubhouse redevelopment	The installation of a new clubhouse at the Gold Park facility has been identified as a priority for the Toowoomba regional council. <b>Funding Gap = TBC</b>	TBC
Noosa Noosa / Wide Bay	Noosa Rugby Union Club	Clubhouse redevelopment	The redevelopment of the existing clubhouse has been identified by the Noosa Shire Council, and will provide additional community benefit outside of Rugby. <b>Funding Gap = 90-95%</b>	\$10 million

\* Local council project submission

# STATE PRIORITY PROJECTS //



## METROPOLITAN

Government Details	Club	Project	Description & Funding Gap	Total Cost
Redland Capalaba / Bowman	Redlands Rugby Union and Recreation Club Inc	Precinct redevelopment	The project, prioritised by Redland City Council, will see the redevelopment of the Judy Holt precinct into a Tier 1 facility. <b>Funding Gap = 10%</b>	\$20 million +
Brisbane Everton / Brisbane	Everton Park Rugby Club	Precinct Master Plan	Completion of the remaining three stages of the clubs precinct master plans, which includes the addition of gender neutral changerooms. <b>Funding Gap = 50%</b>	\$4.5 million
Brisbane Lytton / Bonner	Wynnum & District Rugby Union Club	Universal changeroom development	Identified by Brisbane City Council, the addition for a new (4) changeroom facility will support the club's growing female base, and also support additional user groups such as the Wynnum netball clubs. <b>Funding Gap = 90-95%</b>	\$2 million
Brisbane Bulimba / Griffith	East's Rugby Union	New pavilion development	A substantial pavilion aimed at building commercial opportunities for long term sustainability, this project will be primarily in-house funded, however is still seeking additional partners to support the funding gap. <b>Funding Gap = 50%</b>	\$24 million
Brisbane Maiwar / Ryan	UQ Rugby Club	New pavilion development	A key stage to the University's St Lucia Masterplan aims to establish a Tier 1 facility. <b>Funding Gap = 20%</b>	\$17 million
Gold Coast Coomera / Fadden	Coomera Rugby Union Club	Changeroom and toilet facility development	Identified by Gold City Council, the installation of a changeroom and toilet facility will address a critical gap in current infrastructure at Coomera. <b>Funded</b>	\$1.2 million +

# BALLYMORE STADIUM //



## BUILDING THE FOUNDATION TO INVEST IN RUGBY ACROSS QUEENSLAND

The Queensland Rugby Strategic Plan 2026–2030 explicitly prioritises the **development of Ballymore** as part of its **Secure Our Commercial Future** pillar, recognising that a diversified, commercially sustainable QRU is the foundation upon which community investment is built. By 2030, QRU's vision is to transform Ballymore into a world-class high performance and community precinct, which is an aspiration that serves elite and grassroots rugby simultaneously. Queensland Rugby's infrastructure needs span the full spectrum of the game, and the government partnerships and funding mechanisms that support them are equally varied, from local councils investing in their communities, to state and federal programs designed to deliver grassroots outcomes. Ballymore and the community project pipeline are complementary priorities, each pursued through the relationships and investment pathways most suited to their purpose.

### MAJOR EVENT LEGACY



Ballymore's development as a venue for 2027 & 2029 Rugby World Cup team bases, Olympic venue, state finals and elite competitions generates participation interest and commercial activity that flows directly back to clubs and regions across Queensland.

### SHARED INFRASTRUCTURE



Planned field and lighting upgrades at Ballymore, including a new Field 4 playing surface and upgraded 500 lux competition lighting on Field 1, are community-accessible assets servicing club training, regional competitions and community events alongside high performance programs.

### REINVESTMENT INTO THE GAME



A commercially viable Ballymore that generates revenue through commercial tenancy, event hosting and partnerships, directly strengthens QRU's capacity to invest and resource the programs that grow participation across the state.

# INVESTMENT OPPORTUNITY TIMELINE //



**Current Investment Ask: ~\$38.25M** based on 9 confirmed priority projects with known costs and funding gaps. Three further projects (Coomera, Mackay, Toowoomba) remain in planning and will be costed and added to the pipeline as engagement and design stages mature. This figure will be updated as projects progress.



**Identify Regional Priority Projects** – Use facility audits, participation data, and regional consultation to pinpoint projects that address infrastructure gaps, participation growth areas, and community needs.

**Advocate for Funding** – Develop clear business cases and align project proposals with local, state, and federal strategic priorities to strengthen advocacy and partnership opportunities.

**Secure Funding** – Formalise investment commitments through government grants, partner contributions, and philanthropic support, ensuring transparent governance and accountability structures.

**Deliver Project** – Manage design, approvals, procurement, and construction phases collaboratively with stakeholders to ensure projects are delivered on time, within budget, and to agreed standards.

**Elevate Identified Project to Priority Status** – Evaluate project outcomes and impact, using learnings and demonstrated community benefit to position future or staged developments as strategic priorities for ongoing investment.

## MAJOR MILESTONES

**2025**

QRU FACILITIES STRATEGY BUILD

**2026**

QLD SPORT STRATEGY LAUNCH

**2027**

MENS WORLD CUP

**2028**

COUNCIL, STATE & FEDERAL ELECTIONS

**2029**

WOMEN'S WORLD CUP

**2032**

2032 OLYMPICS

# KEY ACTIONS //



Success of this strategy will not be measured by funding alone. It will be reflected in better planning, stronger partnerships, improved project readiness, and more coordinated advocacy across the rugby system. Over the next four years, Queensland Rugby will focus on the following actions to ensure clubs are supported, governments are aligned, and priority projects are positioned for investment.

Action	Description	Responsible	Timeline
Maintain a Statewide Infrastructure Investment Pipeline	<ul style="list-style-type: none"> <li>Publish and annually update a prioritised statewide project pipeline</li> <li>Align pipeline to participation data, facility audit findings and regional growth</li> <li>Use as primary advocacy reference with all levels of government</li> </ul>	State Infrastructure Lead	Ongoing - quarterly
Strengthen Election & Budget Advocacy	<ul style="list-style-type: none"> <li>Develop structured election commitment strategy ahead of local, state and federal cycles</li> <li>Coordinate regional advocacy messaging with clubs</li> <li>Track and report on commitments secured</li> </ul>	GM - Government	2026-28
Establish a “Shovel Ready” Club Support Framework	<ul style="list-style-type: none"> <li>Develop planning templates and guidance tools</li> <li>Provide education sessions for clubs</li> <li>Support alignment with council masterplans and feasibility planning</li> </ul>	State Infrastructure Lead	2026-27
Advocate for a Dedicated Rugby Infrastructure Fund	<ul style="list-style-type: none"> <li>Engage with State Government to explore a fund supporting early-stage planning</li> <li>Advocate for funding streams that support master planning, design and business case development</li> <li>Position rugby projects for future capital rounds</li> </ul>	GM - Government	2026-27

# KEY ACTIONS //



Action	Description	Responsible	Timeline
Enhance Infrastructure Data & Reporting Capability	<ul style="list-style-type: none"> <li>Develop a live facilities dashboard integrating audit and participation data</li> <li>Improve utilisation tracking and evidence-based advocacy</li> <li>Provide annual infrastructure status updates</li> </ul>	State Infrastructure Lead	Ongoing - quarterly
Strengthen Government & Local Authority Partnerships	<ul style="list-style-type: none"> <li>Embed rugby priorities within local government sport and recreation plans</li> <li>Engage in precinct and growth corridor planning discussions</li> <li>Align infrastructure planning with major event legacy opportunities</li> </ul>	Club Development Managers	Ongoing
Activate Alternative Funding Pathways	<ul style="list-style-type: none"> <li>Support priority projects to be registered with the Australian Sports Foundation</li> <li>Explore philanthropic and co-investment opportunities</li> </ul>	Foundation Manager	2026



## \\ COMMUNITY FACILITY REQUIREMENTS //

*The information contained within this section is informed by the 2019 State Facility Audit, the 2024 National Facility Audit, and ongoing engagement with local governments and rugby clubs to ensure facility data remains current and accurate. As outlined within the Key Actions of this Strategy, the review and ongoing maintenance of live facility audit data remains a core priority.*

*All community club projects listed in this section, irrespective of priority level, meet the eligibility requirements of being compliant organisations, including adherence to Office of Fair Trading requirements. This compliance is a critical prerequisite for consideration by key funding bodies.*

*Priority projects are classified as shovel or near shovel-ready, while identified projects may remain within the planning or development phase. The project pipeline will be reviewed and updated on a quarterly basis to ensure accuracy and continued alignment with funding opportunities.*

# FAR NORTH QUEENSLAND //



## THEMES



Field Lighting



Gender Neutral Amenities



Additional Green Space



## REGIONAL SUMMARY

2024 Participation	% of State	# Rugby Venues	# Playing Surfaces
1677	4.32%	11	21
Gender Neutral Facilities	# Lit Fields	# Multi-field facilities	
73%	17	5	
Tier 1 Facilities	Tier 2 Facilities	Tier 3 Facilities	Community Facilities
0	2	9	0
Rugby Clubs & Associations			
<ul style="list-style-type: none"> <li>• FNQ Rugby Inc</li> <li>• Barron Trinity Sports Club</li> <li>• Brothers Cairns Rugby Union Football Club</li> <li>• Cairns Penrhyn Sports Association</li> <li>• Cairns Wanderers Rugby Union Club</li> <li>• JCU Mariners</li> </ul>		<ul style="list-style-type: none"> <li>• Northern Beaches Mudcrabs Rugby Union</li> <li>• Port Douglas Rugby Club</li> <li>• Southside Crusaders Sports &amp; Culture</li> <li>• Cassowary Coast Junior Rugby Union</li> <li>• Tablelands District Rugby Union</li> </ul>	
Local Government Authorities			
<ul style="list-style-type: none"> <li>• Cairns Regional Council</li> <li>• Douglas Shire Council</li> </ul>		<ul style="list-style-type: none"> <li>• Tablelands Shire Council</li> <li>• Cassowary Coast Regional Council</li> </ul>	



## PRIORITY PROJECTS



Project Location	Project Type	Estimated Cost	1	2	3	4
FNQ Rugby	Home of Rugby - tenure of facility	N/A	✓	✓	✓	✓

## IDENTIFIED PROJECTS

Project Location	Project Type	Estimated Cost	1	2	3	4
Barron Trinity	Clubhouse Upgrade	\$390,000.00	✓	✓		✓
Port Douglas	Multi-Purpose Indoor Facility (Gym) & Lighting Upgrade	\$550,000.00		✓		
Tablelands Rugby Union	Changeroom/Clubhouse Facility	\$500,000.00	✓	✓	✓	
JCU Mariners	Lighting Upgrade	\$300,000.00		✓		✓
Cairns Wanderers	New Greenspace for training/games	TBC		✓	✓	
Northern Beaches	Lighting Upgrade	\$150,000		✓	✓	

# NORTH QUEENSLAND //



## THEMES



Field  
Lighting



Gender  
Neutral  
Amenities

## REGIONAL SUMMARY

2024 Participation	% of State	# Rugby Venues	# Playing Surfaces
3859	9.94%	8	18
Gender Neutral Facilities	# Lit Fields	# Multi-field facilities	
73%	17	8	
Tier 1 Facilities	Tier 2 Facilities	Tier 3 Facilities	Community Facilities
0	1	7	0
Rugby Clubs & Associations			
<ul style="list-style-type: none"> <li>Townsville &amp; District Rugby Union</li> <li>Brothers Rugby Union (Townsville)</li> <li>Burdekin Rugby Union</li> <li>Charters Towers Rugby Union</li> <li>Ingham Rugby Union</li> </ul>		<ul style="list-style-type: none"> <li>Ross River Rugby Club</li> <li>Teachers West Rugby Union</li> <li>Western Suburbs Rugby Union</li> <li>North Ward Junior Rugby Union</li> </ul>	
Local Government Authorities			
<ul style="list-style-type: none"> <li>Townsville City Council</li> <li>Burdekin Regional Council</li> </ul>		<ul style="list-style-type: none"> <li>Charters Towers Regional Council</li> <li>Hinchinbrook Shire Council</li> </ul>	



## PRIORITY PROJECTS

Project Location	Project Type	Estimated Cost	Strategic Objectives			
			1	2	3	4
Townsville & District Rugby Union	Facility Masterplan	\$10 million	✓	✓	✓	✓

## IDENTIFIED PROJECTS

Project Location	Project Type	Estimated Cost	1	2	3	4
Charters Towers Rugby Union	Lighting Upgrade	\$250,000.00		✓		
North Ward Junior Rugby Union	Facility Masterplan - Stage 1 Lighting Upgrade	\$300,000.00		✓		✓
Western Suburbs Rugby Union	New Greenfield site	TBC		✓	✓	
Teachers West	Lighting Upgrade	\$150,000		✓	✓	

# MACKAY WHITSUNDAY //



## THEMES



Field  
Lighting



Gender  
Neutral  
Amenities

## REGIONAL SUMMARY

2024 Participation	% of State	# Rugby Venues	# Playing Surfaces
1139	2.93%	7	10
Gender Neutral Facilities	# Lit Fields	# Multi-field facilities	
73%	9	2	
Tier 1 Facilities	Tier 2 Facilities	Tier 3 Facilities	Community Facilities
0	0	7	0
Rugby Clubs & Associations			
<ul style="list-style-type: none"> <li>Mackay Rugby Union</li> <li>Mackay District Junior Rugby Union</li> <li>Bowen Rugby Union</li> <li>Brothers Rugby Club Mackay</li> <li>Mackay City Rugby Union</li> </ul>		<ul style="list-style-type: none"> <li>Kuttabul Rugby Union</li> <li>Moranbah Bulls Rugby Union</li> <li>Proserpine/Whitsunday Rugby Union</li> <li>Slade Point Rugby Union</li> <li>Whitsunday Junior Rugby Union</li> </ul>	
Local Government Authorities			
<ul style="list-style-type: none"> <li>Mackay Regional Council</li> <li>Whitsunday Regional Council</li> </ul>		<ul style="list-style-type: none"> <li>Isaac Regional Council</li> </ul>	



## PRIORITY PROJECTS

Project Location	Project Type	Estimated Cost	Strategic Pillars			
			1	2	3	4
Quarry Hill Rugby Grounds	Facility Masterplan, Lighting Upgrade	TBC	✓	✓	✓	✓

## IDENTIFIED PROJECTS

Project Location	Project Type	Estimated Cost	1	2	3	4
Bowen Rugby Club	Universal Changeroom Upgrade	\$500,000.00	✓		✓	
Moranbah Bulls Rugby Union	New Universal Changeroom	\$350,000.00	✓		✓	
Slade Point Rugby Club	New Universal Changeroom & Lighting Upgrade	TBC	✓	✓	✓	

## THEMES

**Additional Green Space**

**Field Lighting**

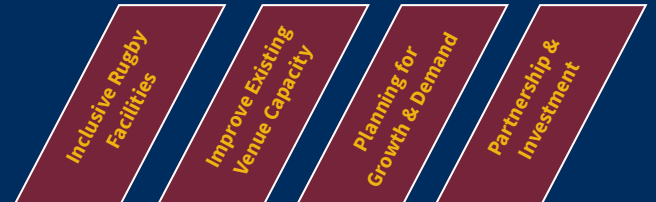
**Gender Neutral Amenities**



## REGIONAL SUMMARY

2024 Participation	% of State	# Rugby Venues	# Playing Surfaces
2505	6.45%	11	18
Gender Neutral Facilities	# Lit Fields	# Multi-field facilities	
73%	17	8	
Tier 1 Facilities	Tier 2 Facilities	Tier 3 Facilities	Community Facilities
1	3	7	0
Rugby Clubs & Associations			
<ul style="list-style-type: none"> <li>Central Highlands Rugby Union</li> <li>Central Highlands Junior Rugby Union</li> <li>Capella Rugby Union</li> <li>Clermont Rugby Union</li> <li>Emerald Rugby Union</li> </ul>	<ul style="list-style-type: none"> <li>Otufelenite Rugby Union</li> <li>Rolleston Rugby Union</li> <li>Rugby Capricornia</li> <li>Biloela Rugby Union</li> <li>Blackwater Rugby Union</li> <li>Brothers Old Boys Rugby Club</li> </ul>	<ul style="list-style-type: none"> <li>Capricorn Coast Rugby Union</li> <li>Colts Rugby Union</li> <li>Dawson Valley Rugby Union</li> <li>The Frenchville Sports Club</li> <li>Gladstone Rugby Union</li> <li>Mt Morgan Rugby Union</li> </ul>	
Local Government Authorities			
<ul style="list-style-type: none"> <li>Banana Shire Council</li> <li>Central Highlands Regional Council</li> <li>Gladstone Regional Council</li> </ul>		<ul style="list-style-type: none"> <li>Isaac Regional Council</li> <li>Livingstone Shire</li> <li>Rockhampton City Council</li> </ul>	

## PRIORITY PROJECTS



Project Location	Project Type	Estimated Cost	1	2	3	4
Baymarea Sports Precinct	Facility Masterplan	\$5 million	✓	✓	✓	✓

## IDENTIFIED PROJECTS

Project Location	Project Type	Estimated Cost	1	2	3	4
Colts Rugby Union - Tom Nutley Field	Lighting Upgrade	\$575,000.00		✓	✓	✓
Dawson Valley Rugby Union	Clubhouse & Lighting Upgrade	\$400,000.00	✓	✓	✓	
CQ University Sports Precinct	Greenfield Development	TBC				✓

# WESTERN QUEENSLAND //



## THEMES



Field Lighting



Gender Neutral Amenities

## REGIONAL SUMMARY

2024 Participation	% of State	# Rugby Venues	# Playing Surfaces
110	0.28%	2	2
Gender Neutral Facilities	# Lit Fields	# Multi-field facilities	
73%	2	1	
Tier 1 Facilities	Tier 2 Facilities	Tier 3 Facilities	Community Facilities
0	0	1	1
<b>Rugby Clubs &amp; Associations</b>			
<ul style="list-style-type: none"> <li>Mt Isa Rugby Union</li> <li>Western Queensland Rugby Union</li> </ul>			
<b>Local Government Authorities</b>			
<ul style="list-style-type: none"> <li>Mt Isa City Council</li> <li>Longreach Regional Council</li> </ul>			



## PRIORITY PROJECTS

Project Location	Project Type	Estimated Cost	<div style="display: flex; justify-content: space-around;"> <div style="writing-mode: vertical-rl; transform: rotate(180deg);">Inclusive Rugby Facilities</div> <div style="writing-mode: vertical-rl; transform: rotate(180deg);">Improve Existing Venue Capacity</div> <div style="writing-mode: vertical-rl; transform: rotate(180deg);">Planning for Growth &amp; Demand</div> <div style="writing-mode: vertical-rl; transform: rotate(180deg);">Partnership &amp; Investment</div> </div>			
			1	2	3	4
Mt Isa Rugby Union	Lighting Upgrade	\$200,000		✓	✓	✓

## THEMES

To be confirmed



## REGIONAL SUMMARY

2024 Participation	% of State	# Rugby Venues	# Playing Surfaces
823	2.12%	TBC	TBC
Gender Neutral Facilities	# Lit Fields	# Multi-field facilities	
TBC	TBC	TBC	
Tier 1 Facilities	Tier 2 Facilities	Tier 3 Facilities	Community Facilities
TBC	TBC	TBC	TBC
Rugby Clubs & Associations			
<ul style="list-style-type: none"> <li>• Barbarians Rugby Club Inc.</li> <li>• Bundaberg Pythons Rugby Union Club Inc.</li> <li>• Fraser Coast Rugby Union Club Inc.</li> <li>• Turtles Brothers Rugby Inc.</li> <li>• The Waves Falcons Rugby Union Club Inc.</li> </ul>			
Local Government Authorities			
<ul style="list-style-type: none"> <li>• Bundaberg Regional</li> <li>• Fraser Coast Regional Council</li> </ul>			

## IDENTIFIED PROJECTS

### No planned projects

Rugby participation and infrastructure demand in Wide Bay is currently limited; however, opportunities will continue to be monitored through future audits. The Wide Bay rugby community shares facilities with other sporting groups, and would act as supporters of local project plans. The current focus area for the Wide Bay region is further development of participation opportunities.

# DARLING DOWNS //



## THEMES



Field Lighting



Gender Neutral Amenities



Field Works

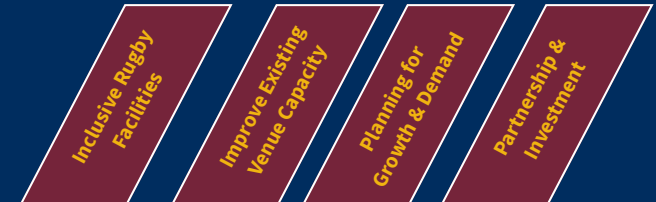


## REGIONAL SUMMARY

2024 Participation	% of State	# Rugby Venues	# Playing Surfaces
3498	9.01%	14	19
Gender Neutral Facilities	# Lit Fields	# Multi-field facilities	
32%	95%	4	
Tier 1 Facilities	Tier 2 Facilities	Tier 3 Facilities	Community Facilities
1	0	13	0
Rugby Clubs & Associations			
<ul style="list-style-type: none"> <li>Downs Rugby</li> <li>Chinchilla Rugby Union</li> <li>Condamine Cods Rugby</li> <li>Dalby &amp; District Rugby Football Club</li> <li>Goondiwindi Junior Rugby</li> <li>Highfields Redbacks Rugby</li> </ul>	<ul style="list-style-type: none"> <li>Roma Rugby Union Football Club</li> <li>South Toowoomba Junior Rugby Club</li> <li>St George &amp; District Rugby Union Club</li> <li>Goondiwindi Rugby Union Football Club</li> </ul>	<ul style="list-style-type: none"> <li>Toowoomba Bears Rugby Club</li> <li>Toowoomba Rangers Rugby Union Club</li> <li>UQG Rugby Union Club</li> <li>USQ Saints Rugby Club</li> <li>Warwick And District Rugby Union Club</li> </ul>	
Local Government Authorities			
<ul style="list-style-type: none"> <li>Balonne Shire Council</li> <li>Goondiwindi Regional Council</li> <li>Lockyer Valley Regional</li> </ul>	<ul style="list-style-type: none"> <li>Maranoa Regional Council</li> <li>Southern Downs Regional Council</li> </ul>	<ul style="list-style-type: none"> <li>Toowoomba Regional Council</li> <li>Western Downs Regional Council</li> </ul>	



## PRIORITY PROJECTS



Project Location	Project Type	Estimated Cost	1	2	3	4
Gold Park - Toowoomba	Precinct Upgrade - Clubhouse, amenities and lighting	\$1.8 million+	✓	✓	✓	✓

## IDENTIFIED PROJECTS

Project Location	Project Type	Estimated Cost	1	2	3	4
Dalby Rugby Union Club - Dalby	Precinct Master Plan - Field works & Lighting	\$200,000		✓	✓	
UQG Gatton	Clubhouse Redevelopment & Lighting upgrade	TBC	✓	✓	✓	

## THEMES



Field Lighting



Gender Neutral Amenities



Additional Green Space



## REGIONAL SUMMARY

2024 Participation	% of State	# Rugby Venues	# Playing Surfaces
2832	7.29%	11	18
Gender Neutral Facilities	# Lit Fields	# Multi-field facilities	
0:1	17	8	
Tier 1 Facilities	Tier 2 Facilities	Tier 3 Facilities	Community Facilities
1	3	7	0
Rugby Clubs & Associations			
<ul style="list-style-type: none"> <li>Sunshine Coast Rugby Union</li> <li>Brothers Rugby Club</li> <li>Caloundra City Junior Rugby Union Club</li> <li>Caloundra Rugby Union Club</li> <li>Eumundi Dragons Junior Rugby Union Club</li> </ul>	<ul style="list-style-type: none"> <li>Flinders Rugby Club</li> <li>Maroochydore Rugby Union Club</li> <li>Nambour Rugby Union Football Club</li> <li>Saints Rugby Union Club</li> </ul>	<ul style="list-style-type: none"> <li>University Of The Sunshine Coast Rugby Club</li> <li>Noosa &amp; District Rugby Union Club</li> <li>Gympie Hammers Rugby Club</li> </ul>	
Local Government Authorities			
<ul style="list-style-type: none"> <li>Sunshine Coast Regional Council</li> <li>Noosa Shire Council</li> <li>Gympie Regional Council</li> </ul>			

## PRIORITY PROJECTS

Project Location	Project Type	Estimated Cost	<div style="display: flex; justify-content: space-around; text-align: center;"> <div style="writing-mode: vertical-rl; transform: rotate(180deg);">Inclusive Rugby Facilities</div> <div style="writing-mode: vertical-rl; transform: rotate(180deg);">Improve Existing Venue Capacity</div> <div style="writing-mode: vertical-rl; transform: rotate(180deg);">Planning for Growth &amp; Demand</div> <div style="writing-mode: vertical-rl; transform: rotate(180deg);">Partnership &amp; Investment</div> </div>			
			1	2	3	4
Noosa Rugby Club	Pavilion Redevelopment	\$10 million	✓	✓	✓	✓

## IDENTIFIED PROJECTS

Project Location	Project Type	Estimated Cost	1	2	3	4
Nambour Rugby Club	Modular universal changerooms	\$1 million	✓	✓	✓	
Brothers Rugby Club	Clubhouse redevelopment	TBC	✓	✓	✓	
Saints Rugby Club	Amenities Upgrade	TBC	✓	✓	✓	

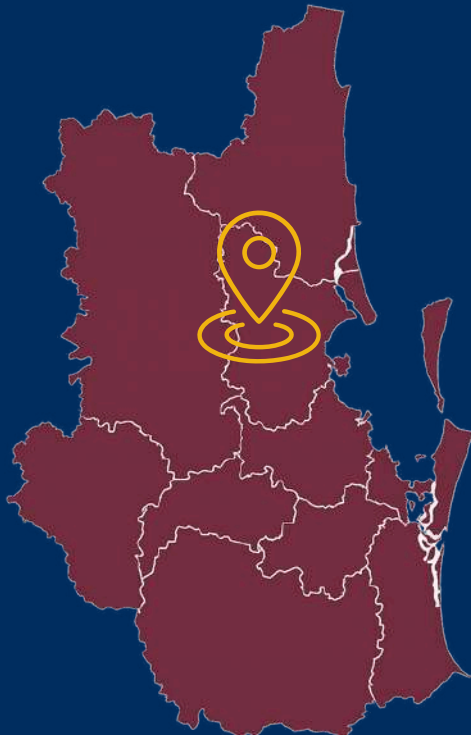
## THEMES



**Field  
Lighting**



**Gender  
Neutral  
Amenities**



## REGIONAL SUMMARY

2024 Participation	% of State	# Rugby Venues	# Playing Surfaces
1374	3.54%	5	11
Gender Neutral Facilities	# Lit Fields	# Multi-field facilities	
60%	11	5	
Tier 1 Facilities	Tier 2 Facilities	Tier 3 Facilities	Community Facilities
2	1	2	0
Rugby Clubs & Associations			
<ul style="list-style-type: none"> <li>Albany Creek GPS JRUFC</li> <li>Caboolture Rugby Club</li> <li>North Lakes Leopards Rugby Club</li> </ul>		<ul style="list-style-type: none"> <li>Pine Rivers JRUFC</li> <li>Redcliffe RUFC</li> </ul>	
Local Government Authorities			
<ul style="list-style-type: none"> <li>Moreton Bay Regional Council</li> </ul>			

## IDENTIFIED PROJECTS



Project Location	Project Type	Estimated Cost	1	2	3	4
Pine Rivers Pumas Rugby Union	Lighting Upgrade	\$150,000		✓	✓	✓
Caboolture Rugby Club	Field 3 Lighting Upgrade	\$150,000		✓	✓	✓
Albany Creek Rugby Club	Lighting Upgrade	\$150,000		✓	✓	✓

# METROPOLITAN NORTH //



## THEMES



Field Lighting



Gender Neutral Amenities



Additional Green Space



## REGIONAL SUMMARY

2024 Participation	% of State	# Rugby Venues	# Playing Surfaces
2832	7.29%	11	18
Gender Neutral Facilities	# Lit Fields	# Multi-field facilities	
0:1	17	8	
Tier 1 Facilities	Tier 2 Facilities	Tier 3 Facilities	Community Facilities
1	3	7	0
Rugby Clubs & Associations			
<ul style="list-style-type: none"> <li>Brisbane Irish Rugby Football Club Inc.</li> <li>Brothers Rugby Club Inc.</li> <li>Everton Park Junior Rugby Union Club Inc.</li> <li>GPS Rugby Club Inc.</li> </ul>		<ul style="list-style-type: none"> <li>North Brisbane Junior Rugby Club Inc.</li> <li>North Brisbane Rugby Union Club Inc.</li> <li>The Brisbane Hustlers Rugby Union Football Club Incorporated</li> </ul>	
Local Government Authorities			
<ul style="list-style-type: none"> <li>Brisbane City Council</li> </ul>			



## PRIORITY PROJECTS



Project Location	Project Type	Estimated Cost	1	2	3	4
Everton Park JRUC	Precinct Masterplan developments	\$4.5 million	✓	✓	✓	✓

## IDENTIFIED PROJECTS

Project Location	Project Type	Estimated Cost	1	2	3	4
Norths Rugby Club	Universal changeroom development	\$2 million	✓	✓	✓	
GPS Rugby Club	Precinct Development - Additional Field & Car parks	\$4 million		✓	✓	
Brisbane Irish Rugby Club	Lighting Upgrade	\$150,000		✓	✓	

# METROPOLITAN SOUTH //



## THEMES



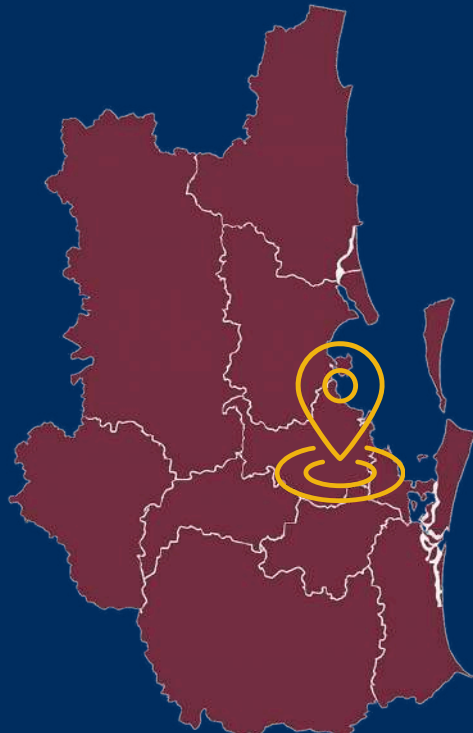
Field Lighting



Gender Neutral Amenities



Additional Green Space



## REGIONAL SUMMARY

2024 Participation	% of State	# Rugby Venues	# Playing Surfaces
5046	12.99%	12	27

Gender Neutral Facilities	# Lit Fields	# Multi-field facilities
41%	18	9

Tier 1 Facilities	Tier 2 Facilities	Tier 3 Facilities	Community Facilities
0	7	5	0

### Rugby Clubs & Associations

- |  |  |
|--|--|
| <ul style="list-style-type: none"> <li>• Easts Rugby Union Inc.</li> <li>• Riverside Junior Rugby Union Club Incorporated</li> <li>• Riverside Rugby Union Club Incorporated</li> <li>• Souths Rugby Union Club Incorporated</li> <li>• Sunnybank Junior Rugby Club Inc</li> <li>• Sunnybank Senior Rugby Club Inc.</li> <li>• Wynnum &amp; District Rugby Union Club Inc</li> </ul> | <ul style="list-style-type: none"> <li>• Browns Plains Junior Rugby Union Club</li> <li>• Logan City Rugby Union Club Incorporated</li> <li>• Yatala-Yarrabilba Junior Rugby Union Club</li> <li>• Redland Bay Cyclones Junior Rugby Union Club</li> <li>• Redlands Rugby Union And Recreation Club Inc</li> <li>• Beaudesert Rugby Union Football Club Inc</li> </ul> |
|--|--|

### Local Government Authorities

- |   |   |
|---|---|
| <ul style="list-style-type: none"> <li>• Brisbane City Council</li> <li>• Logan City Council</li> </ul> | <ul style="list-style-type: none"> <li>• Redland City Council</li> <li>• Scenic Rim Regional Council</li> </ul> |
|---|---|



## PRIORITY PROJECTS



Project Location	Project Type	Estimated Cost	1	2	3	4
Redlands Rugby Union and Recreation Club Inc	Precinct redevelopment	\$20 million+	✓	✓	✓	✓
Wynnum & District Rugby Union Club Inc	Universal changeroom development	\$2 million	✓	✓	✓	✓
Easts Rugby Union Inc.	Major Pavilion Development	\$24 million	✓	✓	✓	✓

## IDENTIFIED PROJECTS

Project Location	Project Type	Estimated Cost	1	2	3	4
Souths Rugby Club	Second Field Development, Lighting Upgrade & Water Harvesting	TBC		✓	✓	
Sunnybank Rugby Club	Gender neutral match officials changeroom	\$80,000	✓			

# METROPOLITAN WEST //



## THEMES



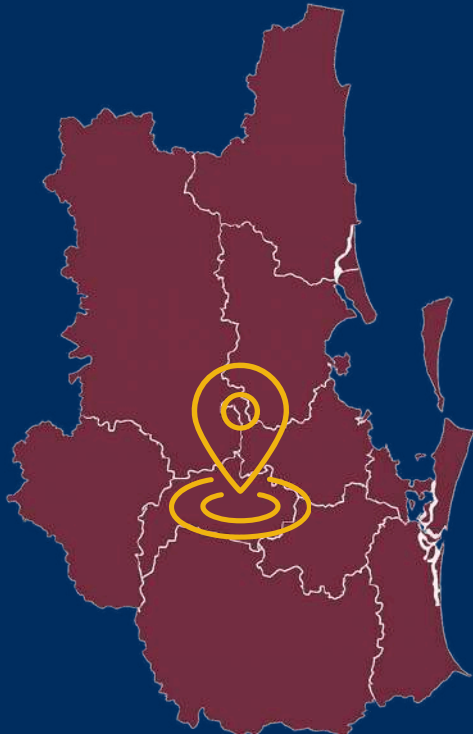
Field Lighting



Gender Neutral Amenities



Additional Green Space



## REGIONAL SUMMARY

2024 Participation	% of State	# Rugby Venues	# Playing Surfaces
3177	8.18%	8	17
Gender Neutral Facilities	# Lit Fields		# Multi-field facilities
75%	14		8
Tier 1 Facilities	Tier 2 Facilities	Tier 3 Facilities	Community Facilities
1	2	5	0
Rugby Clubs & Associations			
<ul style="list-style-type: none"> <li>• Forest Lake Wasps Rugby Union Club (Juniors)</li> <li>• Kenmore Districts Rugby Club</li> <li>• Mustangs Rugby Football Club</li> <li>• Taylor Bridge Rugby Club</li> <li>• The Lions Rugby Union Club</li> </ul>		<ul style="list-style-type: none"> <li>• University Of Queensland Rugby Football Club</li> <li>• Wests Bulldogs Rugby Club</li> <li>• Ipswich Rugby Union Club</li> <li>• Springfield Lakes Junior Rugby Union</li> </ul>	
Local Government Authorities			
<ul style="list-style-type: none"> <li>• Brisbane City Council</li> <li>• Ipswich City Council</li> </ul>			



## PRIORITY PROJECTS

Project Location	Project Type	Estimated Cost	Strategic Pillars			
			1	2	3	4
University of QLD Rugby Club	Clubhouse redevelopment	\$17 million	✓	✓	✓	✓

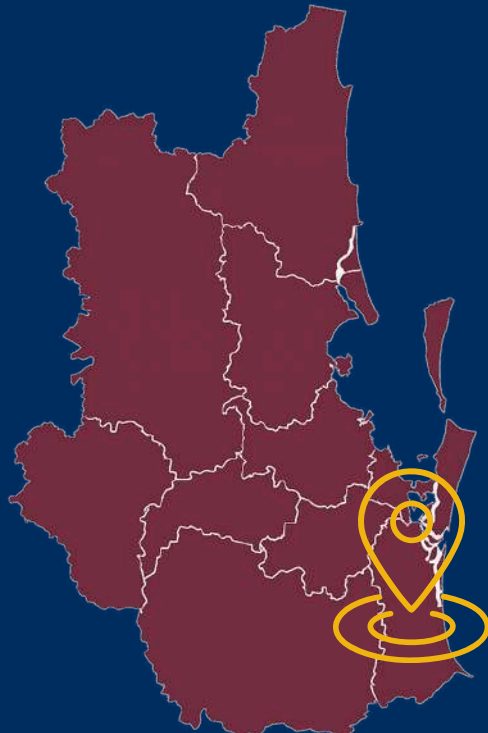
## IDENTIFIED PROJECTS

Project Location	Project Type	Estimated Cost	1	2	3	4
Wests Rugby Club	Facility master plan	TBC		✓	✓	
Kenmore Rugby Club	Precinct Upgrade - clubhouse renovations & Lighting	TBC	✓	✓		✓

## THEMES



### Gender Neutral Amenities



## REGIONAL SUMMARY

2024 Participation	% of State	# Rugby Venues	# Playing Surfaces
4980	12.82%	9	16
Gender Neutral Facilities		# Lit Fields	# Multi-field facilities
12%		16	6
Tier 1 Facilities	Tier 2 Facilities	Tier 3 Facilities	Community Facilities
1	0	8	0
Rugby Clubs & Associations			
<ul style="list-style-type: none"> <li>Gold Coast District Rugby Union</li> <li>Bond Pirates Rugby Union Club Inc</li> <li>Colleges Rugby Union Club Incorporated</li> <li>Coolangatta Tweed Barbarians Rugby Union Club</li> <li>Coomera Crushers Rugby Union Club Inc.</li> <li>Gold Coast Rugby Union Football Club Inc</li> </ul>		<ul style="list-style-type: none"> <li>Helensvale Rugby Union Club Inc</li> <li>Hinterland Celtics Rugby Union Football Club Inc.</li> <li>Nerang Rugby Union Club Incorporated</li> <li>Palm Beach Currumbin Rugby Union Club Inc.</li> <li>Surfers Paradise Rugby Union Club Incorporated</li> </ul>	
Local Government Authorities			
<ul style="list-style-type: none"> <li>Gold Coast City Council</li> <li>Logan City Council</li> </ul>			

## PRIORITY PROJECTS

Project Location	Project Type	Estimated Cost	<div style="display: flex; justify-content: space-around;"> <div style="writing-mode: vertical-rl; transform: rotate(180deg);">Inclusive Rugby Facilities</div> <div style="writing-mode: vertical-rl; transform: rotate(180deg);">Improve Existing Venue Capacity</div> <div style="writing-mode: vertical-rl; transform: rotate(180deg);">Planning for Growth &amp; Demand</div> <div style="writing-mode: vertical-rl; transform: rotate(180deg);">Partnership &amp; Investment</div> </div>			
			1	2	3	4
Coomera Sports Park	Changeroom and Toilet Amenity development	\$1 million +	✓	✓	✓	✓

## IDENTIFIED PROJECTS

Project Location	Project Type	Estimated Cost	1	2	3	4
Helensvale Rugby Club	Universal changeroom upgrade	TBC	✓	✓		
Nerang Rugby Club	Universal changeroom & Lighting upgrade	\$200,000	✓	✓	✓	
Gold Coast Eagles Rugby Club	Universal changeroom upgrade	TBC	✓			



## \\ APPENDICES //

# CONSULTATION OVERVIEW //



Rugby Community		Government	Miscellaneous
<ul style="list-style-type: none"> <li>• Brisbane Junior Rugby Union</li> <li>• Capricorn Coast Rugby Union</li> <li>• Central Queensland Rugby Union</li> <li>• Downs Rugby</li> <li>• Far North QLD Rugby Inc</li> <li>• Gold Coast &amp; District Rugby Union</li> <li>• Mackay District Rugby Union</li> <li>• Rugby Bundaberg</li> <li>• Sunshine Coast Rugby Union</li> <li>• Townsville &amp; District Rugby Union</li> <li>• Albany Creek Brumbies</li> <li>• Bond Pirates Rugby Club</li> <li>• Brisbane Irish Rugby Club</li> <li>• Brothers Rugby club Sunshine Coast</li> <li>• Coomera Crushers Rugby Union Club</li> <li>• Eumundi Rugby Club</li> <li>• Gold Coast Eagles Rugby Club</li> <li>• Griffith University Knights Rugby Club</li> <li>• Helensvale Hogs Rugby Union Club</li> </ul>	<ul style="list-style-type: none"> <li>• Moranbah Bulls Rugby Union</li> <li>• North Brisbane Rugby Union Club</li> <li>• North Lakes Junior Rugby Union Club</li> <li>• Palm Beach Rugby Club</li> <li>• Redcliffe Rugby Union Club</li> <li>• Redland Bay Cyclones</li> <li>• South Toowoomba Junior Rugby Union</li> <li>• Surfers Paradise Rugby Club</li> <li>• Tablelands District Rugby Union Club Inc</li> <li>• USQ Rugby Club</li> <li>• UQ Rugby Club</li> <li>• Wynnum &amp; District Rugby Union Club</li> </ul>	<ul style="list-style-type: none"> <li>• Queensland State Government</li> <li>• Brisbane City Council</li> <li>• Cairns Regional Council</li> <li>• Gold Coast City Council</li> <li>• Ipswich City Council</li> <li>• Lockyer Valley Regional Council</li> <li>• Logan City Council</li> <li>• Mackay Regional Council</li> <li>• Moreton Bay Regional Council</li> <li>• Noosa Shire Council</li> <li>• Redland City Council</li> <li>• Rockhampton Regional Council</li> <li>• Sunshine Coast Regional Council</li> <li>• Toowoomba Regional Council</li> <li>• Townsville Regional Council</li> </ul>	<ul style="list-style-type: none"> <li>• UQSport</li> </ul>





# COMMUNITY FACILITIES STRATEGY

## KEY CONTACTS

MATT HORAN

**General Manager - Government  
Queensland Rugby Union**

Matt.Horan@reds.rugby

GAVEN HEAD

**General Manager - Community  
Rugby**

**Queensland Rugby Union**

Gaven.Head@reds.rugby

JOHN BUTTERWORTH

**Senior Club Development Manager -  
South Queensland  
Rugby Australia**

John.Butterworth@rugby.com.au

MATT KAYE

**Senior Club Development Manager -  
Greater Queensland & Affiliates  
Rugby Australia**

Matt.Kaye@rugby.com.au